

UN WOMEN

# Briefing Note on Feminist Collaborative Evaluation On the Social Norms Change Outcome Area

# Rationale for Feminist Collaborative Evaluation of the Social Norms Outcome area

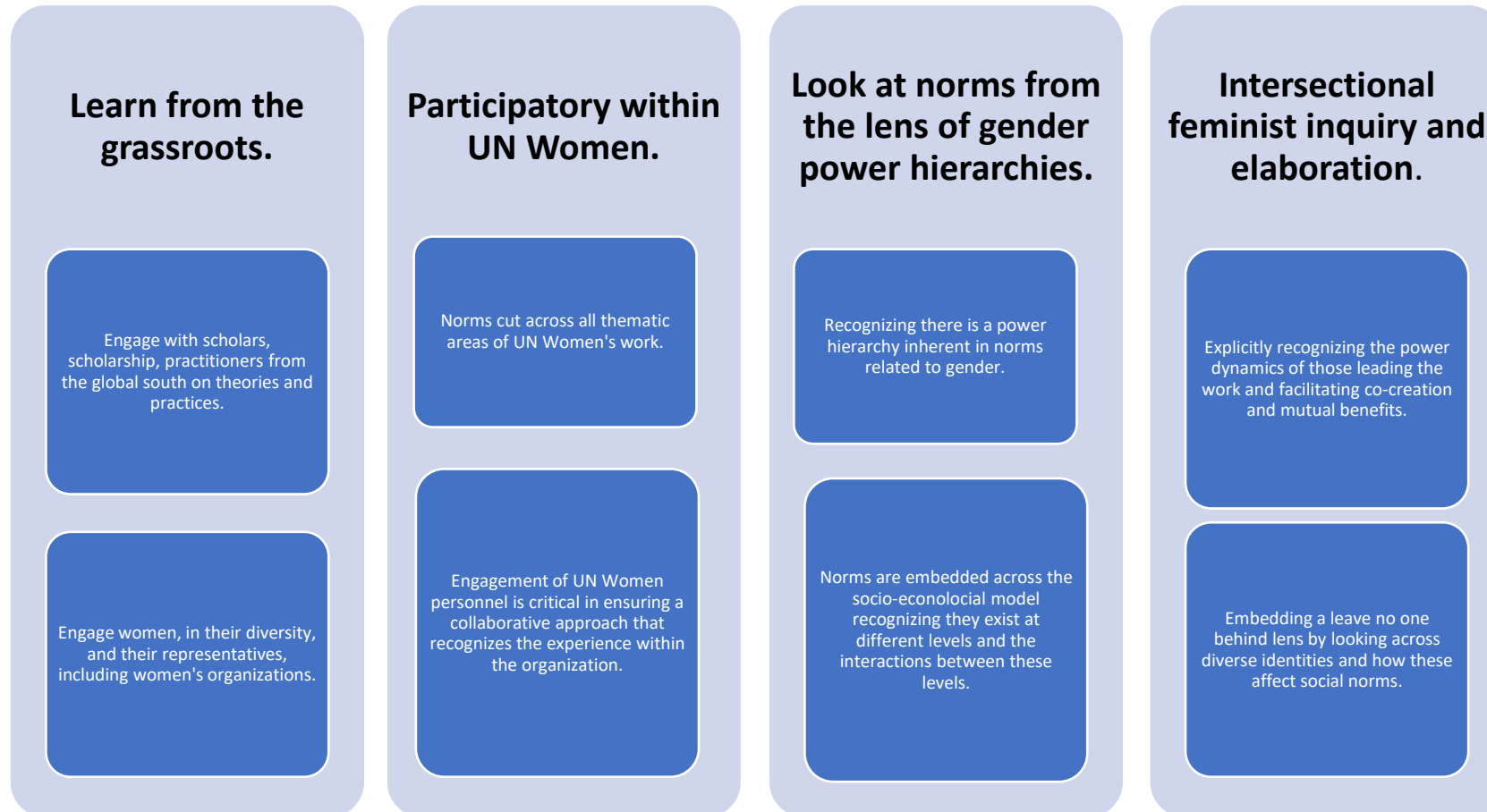
- ▶ The Independent Evaluation Service is leading a **formative evaluation** of UN Women's social norms outcome area as committed to in the Global Evaluation Plan for 2023.
- ▶ Regional level – 4 RO's interested in evaluation on social norms (AP, ECA, LAC, ESA)
- ▶ Social norms is a complex area of the UN Women global Strategic Plan with ongoing development on how this translates into programmatic approaches.

**Feminist Collaborative Evaluation (FCE) is an approach where evaluators work collaboratively with the evaluand and stakeholders to ensure a deep understanding of context and production of real-time insights that can feed directly into the programmatic development.**

**The FCE will facilitate an in-depth regional approach to provide comprehensive analysis and evidence based on experience at the country level.**

# Aligned with the feminist principles guiding the PPID social norms work

▶ The Feminist Collaborative Approach entails systematically identifying opportunities for collaboration with stakeholders in the planning and implementation of the evaluation while applying the feminist principles.



## FCE Purpose

The purpose is to support the production of real-time insights to feed into the development of the social norms outcome area and facilitate learning about approaches aimed at changing social norms to achieve gender equality and women's empowerment.

## Scope

The FCE will include efforts primarily between 2019 – present. The regions that expressed interest in a case study include Asia and the Pacific, Europe and Central Asia, Eastern and Southern Africa and Latin America and the Caribbean regions, and thus, will be the focus of the country case studies.

## FCE Objectives

### Objectives

1. **Contribute to building an understanding on social norms efforts implemented by UN Women and pathways of change being applied through programmatic efforts** across different regions and thematic areas.
2. **Feed into the headquarters led programmatic development of the social norms area** with evaluative evidence.
3. **Contribute to building a repository** (including internal and external information) of approaches to measuring social norms, which could be used by UN Women CO's to support programming on social norms.
4. **Contribute to the understanding of UN Women's niche/potential role** with respect to social norms programming in the UN system and beyond, considering efforts of civil society at both country and global levels.
5. **Identify lessons learned and recommendations related to future programming and corporate level requirements** or systems necessary to support and measure progress in this area of work.

## Key Questions

- **What have we learned about social norms programmatic work implemented by UN Women?**
  - What is the current investment and portfolio of efforts at UN Women dedicated to social norms work?
  - How are different initiatives conceptualizing social norms programming at UN Women in relation to the socio-ecological model?
  - To what extent is the leave no one behind principle integrated in UN Women's social norms programming?
  - What are the implicit / explicit theories of change being applied through programmatic efforts and how are these informed and implemented collaboratively with civil society?
  - What measurement approaches are feasible?
- **What are the opportunities/niche for UN Women to contribute to social norms programmatic space externally?**
- **What are the opportunities at the organizational level for supporting UN Women personnel in planning, implementing, monitoring and evaluating social norms work?**

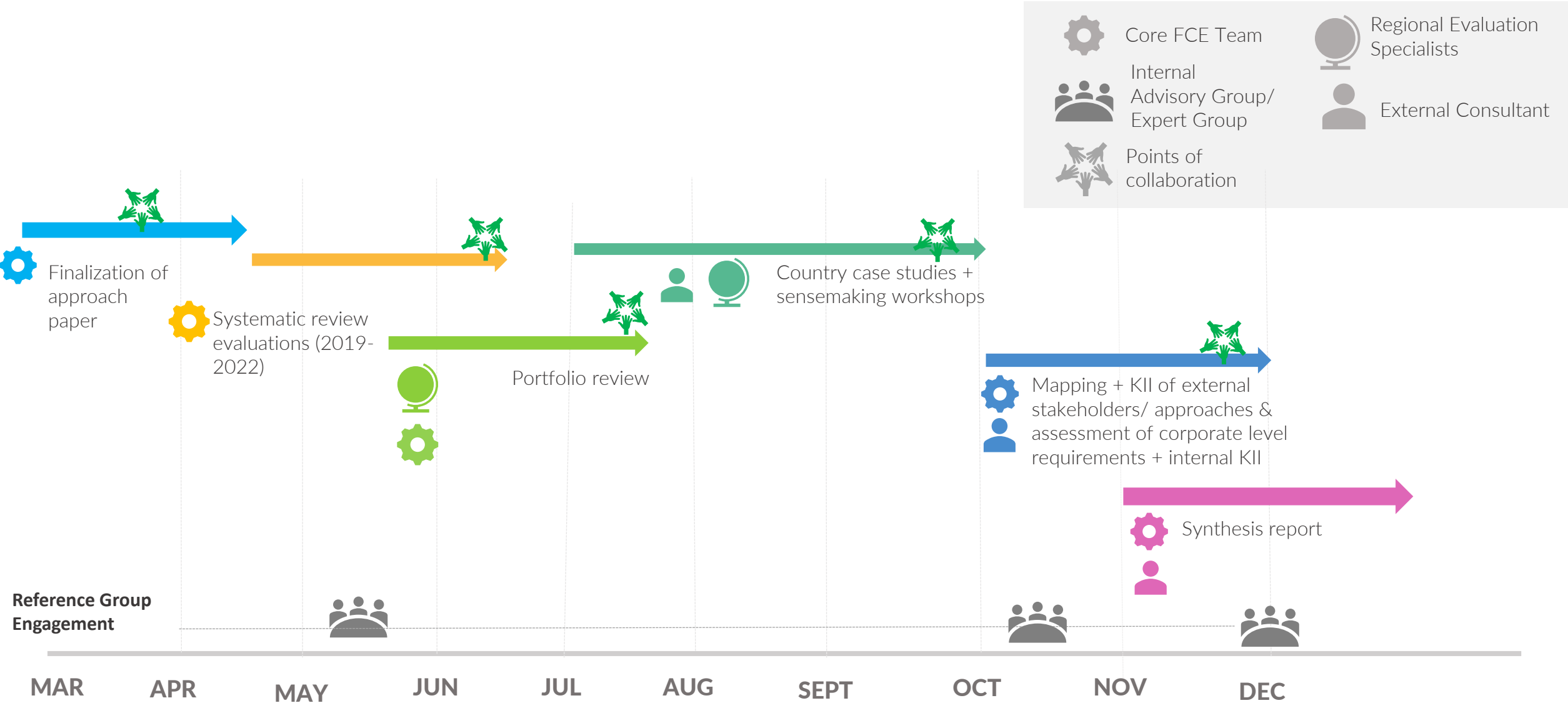
## Key products

- Meta-synthesis of evaluations
- Portfolio review
- Country case studies – 1 (potentially 2) in AP, ECA, ESA, LAC
- External mapping of social norms efforts
- Review of UN Women internal systems

## Key methods

- Desk review
- Feminist inquiry, storytelling, most significant change
- KIIs, FGD's, participatory sensemaking workshops
- Review of RMS & DAMs/prodocs

# Overview of Feminist Collaborative Evaluation key milestones



THANK YOU